



M. N. PADIA & CO.

70, Kika Street, Gulawadi, Mumbai 400 004.
T. : 91 22 2242 6293 , 2242 3547 , 2927 1311
F. : 91 22 2242 4536

E. : savewater@mpadia.com , W. : www.mpadia.com

Consumption of solvent cement										
Pipe size (inch)	1/2	3/4	1	1 1/4	1 1/2	2	3	4	6	8
No. of fittings per liter	274	169	148	106	74	42	32-40	21-30	5-10	3-5

Supreme Aqua Gold Solvent Weld Pipes as per ASTM D 1785 Price list dated 15-12-2013

Rate per 3 mtr length

Size in Inch	1/2"	3/4"	1"	1 1/4"	1 1/2"	2"	2 1/2"	3"	4"	6"	8"
Size in mm	21.34	26.67	33.4	42.16	48.26	60.32	73.02	88.9	114.3	168.28	219.08
Sch 40 Working Pressure kgf/cm ² @23°C	41.4	33.1	31	25.5	22.8	19.3	20.7	17.9	15.2	12.4	11
Aqua Gold Pipe Sch 40	166	214	329	433	518	694	1129	1472	2096	3627	5696
Sch 80 Working Pressure kgf/cm ² @23°C	58.6	47.6	43.4	35.9	32.4	27.6	29	25.5	22.1	19.3	17.2
Aqua Gold Pipe Sch 80	197	268	393	546	669	938	1443	1923	3038	5635	8464

Fittings Sch 80	1/2"	3/4"	1"	1 1/4"	1 1/2"	2"	2 1/2"	3"	4"	6"	8"
Ball Valve (Brass Ball)	309	380	538	1114	1488	2479					
Ball Valve (Plastic Ball)				658	836	1297	3987	6230	10616		
Bend 90°	20	30	52	83	109	176	339	505	918	3073	6367
By Pass Bend	48	64	93	151	193	294					
Circuit Testing Plug	6	11	37	51	63	101					
Coupling	8	11	19	27	34	44	92	148	205	689	
Cross Tee	17	27	41								
Elbow 45°	8	13	21	31	40	57	131	202	207		
Elbow 90°	10	15	22	34	57	92	136	219	406	1069	3641
Endcap	5	8	14	16	23	38	64	92	165	769	909
FTA Metal	66	98	182	369	309	517					
FTA Plastic	7	10	17	22	28	41	83	128	220	821	1589
Female Elbow Metal	73	112	228	421							
Female Elbow Plastic	9	14	24	38	55	75			394		
Female Tee Metal	88	156	325								
Female Tee Threaded	13	19	34	51	67	106			543		
Flange Adapter			50		85	142	208	234	426		
MTA Metal	96	136	214	397	484	676					
MTA Plastic	5	8	13	24	29	52	76	143	207	821	1589
Pipe Clip (Plastic)	1	2	3	4	10	13					
Tail Piece (Fabricated)					67	72	122	174	314	617	1120
Tail Piece with Flange (Fab)						1188	1287	1532	1919	2769	
Tank Connector	20	37	43	71	79	135	222	336	588		
Tank Connector (Fabricated)	30	40	50	103	121	156	552	883	1257		
Tee	12	19	30	46	81	112	199	288	544	2096	4670
Threaded Plug	3	7	12	15	45	98	139	176	292		
Union	23	31	50	67	118	134					



	3/4" x 1/2"	1" x 1/2"	1" x 3/4"	1 1/4" x 1/2"	1 1/4" x 3/4"	1 1/4" x 1"	1 1/2" x 1/2"	1 1/2" x 3/4"	1 1/2" x 1"	1 1/2" x 1 1/4"	2" x 1/2"
Female Elbow Metal	91	101	154								
Female Tee Metal	107	136	164		197			247			
FTA Metal	75	83	113								
MTA Metal	105	116	153								
Reducer Bushing	4	8	8	15	15	15	19	19	19	19	31
Reducer Elbow	20	20	25	59							
Reducer Socket	10	15	15	30	30	30	43	43	43	43	74
Reducer Tee	20	29	29	43	43	43	58	58	58	58	92
	2" x 3/4"	2" x 1"	2" x 1 1/4"	2" x 1 1/2"	2 1/2" x 1/2"	2 1/2" x 3/4"	2 1/2" x 1"	2 1/2" x 1 1/4"	2 1/2" x 1 1/2"	2 1/2" x 2"	3" x 1/2"
Reducer Bushing	31	31	31	31	66	66	66	66	66	66	108
Reducer Elbow									174	228	
Reducer Socket	74	74	74	74	147	147	147	147	147	147	
Reducer Tee	92	92	92	92			240	240	240	240	445
	3" x 3/4"	3" x 1"	3" x 1 1/4"	3" x 1 1/2"	3" x 2"	3" x 2 1/2"	4" x 1/2"	4" x 3/4"	4" x 1"	4" x 1 1/4"	4" x 1 1/2"
Reducer Bushing	108	108	108	108	108	108	161	161	161	161	161
Reducer Elbow					347						
Reducer Socket			236	236	236		404	404	404	404	404
Reducer Tee	445	445	445	445	445	445			871	871	871
	4" x 2"	4" x 2 1/2"	4" x 3"	6" x 1/2" / x 3/4" / x 1" / x 1 1/4" / x 1 1/2" / x 2" / x 2 1/2"					6" x 3"	6" x 4"	8" x 6"
Reducer Bushing	161	161	161			NA			NA	NA	858
Reducer Elbow		635	594			NA					
Reducer Socket	404	404	404			1021			1021	1021	1577
Reducer Tee	871	871	871			NA			2570	2570	4033
PVC Solvent	118ml	237ml	473ml	946ml							
Regular (Recomm. upto 2")	142	220	380	760							
Medium (Recomm. above 2")	155	250	438	835							
	100ml	250ml	500ml	1000ml							
Primer (Recomm. above 2")	75	140	250	450							

Terms : 1. Payment Immediate. 2. Delivery charges extra at actual. 3. VAT Extra. 5% on Fittings & 12.5% on Solvents.



M. N. PADIA & CO.

70, Kika Street, Gulalwadi, Mumbai 400 004.


T. : 91 22 2242 6293 , 2242 3547 , 2927 1311

F. : 91 22 2242 4536

E. : savewater@mnpadia.com , W. : www.mnpadia.com

Supreme UPVC Pipe for Agriculture Conforming to IS 4985-81 dt 15-12-2013

Rate per Pipe 6 mtr length

Outside Dia		Working Pressure in kg/cm ²						
mm	inch	2.5 kg/cm ²	4 kg/cm ²	6 kg/cm ²	8 kg/cm ²	10 kg/cm ²	15 kg/cm ²	
LBS / Sq. Inch		36.75	58.8	88.2	117.6	147	220.5	
Feet/Head of water		82	131	196	262	328	492	
20	¾"					136	298	
25	¾"					197	398	
32	1"					302	599	
40	1¼"				309	425	521	823
50	1½"				477	665	810	1071
63	2"		529	787	1058	1231		
75	2½"		745	1099	1532	1758		
90	3"	707	1034	1557	2144	2511		
110	4"	1025	1523	2247	3204	3746		
140	5"	1661	2589	3800	5291	6115		
160	6"	2123	3297	4795	6907	7897		
180	7"	2762	4349	6253	8635	10280		
200	8"	3354	5180	7815	10726	12527		
225	9"	4354	6805	9893	13485	16136		
250	10"	5248	8320	12158	17217	20440		
280	11"	6885	10758	15579	21527	26091		
315	12"	8722	13521	19855	27045	33067		
355	14"	12417	19019	27990	27495			
400	16"	15716	24192	34956				
450	18"	19942	30735	44572				

Ringfit Pipes	
6 kg/cm ²	10 kg/cm ²
876	1346
1216	1901
1748	2699
2524	3991
4171	6535
5278	8455
6781	10622
8548	13383
10861	17258
13068	20944
17041	27110
21339	33434

PLAIN PIPES MARKED IN BOLD. ALL OTHERS QUICK FIT PIPES. RINGFIT PIPES ARE MADE TO ORDER

Pipes above 355mm and in 8 kg/cm² are made to order.

Properties	
Hazen Williams constant	150
Specific Gravity	1.41 - 1.46
Co-efficient of linear expansion	5.4x10 ⁻⁵ mm/m/°C
Combined flexural and Compressive strength	600 - 650 kgf / cm ²
Impact strength at 20°C	3 kgf / cm ²
Modulus of elasticity	3 - 3.8 x 10 ⁴ kgf/cm ²
Vicat softening point	80° C
Electrical resistance	10 ¹⁴ ohm, cm



CONSUMPTION OF SOLVENT CEMENT :

Diameter of pipe (mm)	20	25	32	40	50	63	75	90	110	140	160	180	200	225	250	280	315	355	400	450
Appx. no. of joints which can be made per liter of solvent cement	324	270	225	180	130	125	103	79	54	36	27	25	15	12	9	7	5	3	2	2



Terms : 1. Payment Immediate. 2. Delivery charges extra at actual. 3. VAT Extra. 5% on Fittings & 12.5% on Solvents.



M. N. PADIA & CO.

70, Kika Street, Gulalwadi, Mumbai 400 004.

T. : 91 22 2242 6293 , 2242 3547 , 2927 1311

F. : 91 22 2242 4536

E. : savewater@mnpadia.com , W. : www.mnpadia.com

Supreme PVC Agricultural Fabricated Fittings Price list dated 15-12-2013

SIZE in Inch	1/2"	3/4"	1"	1 1/4"	1 1/2"	2"	2 1/2"	3"	4"	5"	6"	7"	8"	9"	10"	11"	12"	14"	16"	18"
Size in mm	20	25	32	40	50	63	75	90	110	140	160	180	200	225	250	280	315	355	400	450
Bend 4 kg/cm ²						53	83	135	252	621	974	1370	1713	2726	3572	5071	7584	11090	15361	22558
Bend 6 kg/cm ²				21	22	72	114	194	358	890	1364	1887	2561	3835	5159	7236	10981	16511	22576	38275
Bend 10 kg/cm ²	7	10	17	31	58	122	195	338	624	1534	2296	3125	4413	6373	9254	12143	18787			
Bend 15 kg/cm ²	13	18	31	47	76															
Coupler 4 kg/cm ²						17	26	41	72	142	207	289	395	571	732	1001	1398	2053	2838	4055
Coupler 6 kg/cm ²				7	13	24	37	61	105	207	293	409	565	806	1068	1448	2076	2974	4330	6183
Coupler 10 kg/cm ²	2	4	6	11	21	39	62	100	176	341	655	684	974	1359	1886	2419	3705			
Coupler 15 kg/cm ²	5	7	11	18	28															
End Cap 4 kg/cm ²														463	619	830	1142	1629	2177	4607
End Cap 6 kg/cm ²									199	279	385	430	634	860	1145	1567	2188	3131	3762	
FTA 10 kg/cm ²						94	155	241	421	580	801	1121	1577	2154		4166				
MTA 10 kg/cm ²									352	476	649	936	1412	1994						
Short Bend 4 kg/cm ²													1499	1742	2426	3013	4234	5552	8291	
Short Bend 6 kg/cm ²									619	806	1055	1287	1886	2304	3135	4099	5752	7777	11057	
Single Y 6 kg/cm ²									584	1048	1265	1847	2544	3314	4258	5667	8110	11449	16555	
Tail pc only 6 kg/cm ²						15	24	41	71	142	199	306	414	579	747	1091	1522	2261	3093	4672
Tail pc only 10 kg/cm ²					15	26	38	59	107	221	328	484	672	902	1210	1823	2680			
Tee 4 kg/cm ²														2111	2531	3547	4740	6907	9160	14380
Tee 6 kg/cm ²													2144	2747	4279	4668	6578	9244	12205	18030
Tee 10 kg/cm ²									1405	1765	2609	3186	4049	5301	7978	10008				
Size in mm	200x63	200x75	200x90	200x160	225x110	250x160	250x200	315x160	315x200	315x250	400x160									
Reducer 6 kg/cm ²	551	679	650	1011			1368	1048	2775	2128	1872	11472								
Reducer Tee 6 kg/cm ²	1611	1621	1643	2816	2856	3050	3326	3928	5638	6078	9981									
Reducer Y 6 kg/cm ²		1721	1992	2313	2471	3245	3683	5812	5800	7414										

Supreme PVC Fittings for Agriculture conforming to IS 7834 - 1976

SIZE in Inch	1/2"	3/4"	1"	1 1/4"	1 1/2"	2"	2 1/2"	3"	4"	5"	6"	7"	8"	10"
Size in mm	20	25	32	40	50	63	75	90	110	140	160	180	200	250
Coupler	4	5	7	11	17	35	55	86	162	228	280		524	
Elbow 45° (PN16)	9	14	23	33	53	71	134	193	298	184			784	
Elbow 90° (PN 6)				22	35	61	92	160	239	307	405	826	1945	3842
Elbow 90° (PN 10)	5	6	12			67	101	176	262					
End Cap Plain	3	4	6	9	11	19	30	51	67	99	162	230	353	
End Cap Threaded	4	6	8	13	19	22	35	51	83					
Flange (PN 6)						39	45	54	81					
Flange Adapter (PN6)						130	199	232	405					
FTA	5	6	7	11	21	46	55	88	147		292			
MTA	4	7	8	12	17	33	40	81	112	146	273			
Service Saddle				45	59	103	115	230	139	162	185		383	
Tail Piece w/o Flange						22	31	41	67	114	170		293	
Tee (PN 6)				28	42	88	125	221	372	473	824	1067	2723	5099
Tee (PN 10)	7	11	17			97	132	244	409					



Size in mm	25x20	32x20	32x25	40x25	40x32	50x32	50x40	63x32	63x40	63x50	75x40	75x50	75x63	90x50	90x63	90x75	20x1/2"	25x1/2"	
FTA	7	11	11	17									56		79	88		74	
MTA													36		47	56			
Reducer	5	8	7	9	11	14	16	22	22	25	30	28	39	43	50	54			
Reducer Bushing	3	5	5		9	12	12		19	20		34	36	43	41	42			
Reducer Elbow				17															
Reducer Tee	13	23	22	24	52								110		104	129	186	76	
Size in mm	110x50	110x63	110x75	110x90	140x75	140x90	140x110	160x90	160x110	160x140	200x110	200x160							
FTA				180															
Reducer		74	76	90	100	92	143	176	203	203	373	386							
Reducer Bushing	69	74	75	82			142		188										
Reducer Tee		219	190	205					370										2844 (F 10kg)

Terms : 1. Payment Immediate. 2. Delivery charges extra at actual. 3. VAT Extra. 5% on Fittings & 12.5% on Solvents.



M. N. PADIA & CO.

70, Kika Street, Gulalwadi, Mumbai 400 004.

T. : 91 22 2242 6293 , 2242 3547 , 2927 1311

F. : 91 22 2242 4536

E. : savewater@mnpadia.com , W. : www.mnpadia.com

Supreme uPVC High Pressure Threaded Pipes as per ASTM D 1785 Price list dated 15-12-2013

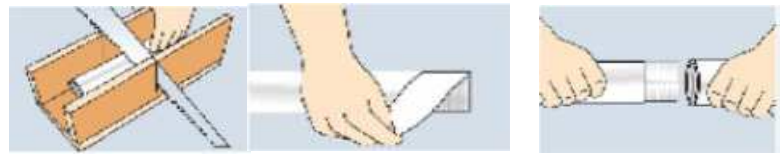
Rate per 3 mtr length

Size in Inch	1/2"	3/4"	1"	1 1/4"	1 1/2"	2"	2 1/2"	3"	4"	6"	8"
Size in mm OD	21.34	26.67	33.4	42.16	48.26	60.32	73.02	88.9	114.3	168.28	219.08
Threaded Pipe Sch 40	164	213	326	429	527	707	1210	1552	2209	3822	6003
Wall Thickness in mm	2.77	2.87	3.38	3.56	3.68	3.91	5.16	5.49	6.02	7.11	8.18
Sch 40 Working Pressure kgf/cm ² @23°C	20.7	16.5	15.5	12.7	11.4	9.6	10.3	8.9	7.6	6.5	5.5
Threaded Pipe Sch 80	201	274	401	557	703	956	1547	2027	3068	5690	8546
Wall Thickness in mm	3.73	3.91	4.55	4.85	5.08	5.54	7.01	7.62	8.56	10.97	12.7
Sch 80 Working Pressure kgf/cm ² @23°C	29	23.4	22.1	17.9	16.5	13.8	14.5	13.1	11	9.7	8.3
Threaded Pipe Sch 120	245	332	497	657	796	1217	1777	2411	3865	7519	
Wall Thickness in mm	4.32	4.32	5.08	5.46	5.72	6.35	7.62	8.89	11.1	14.27	
Sch 120 Working Pressure kgf/cm ² @23°C	35.2	26.9	24.8	20.7	18.6	16.5	15.9	15.2	15.2	13.1	

Both ends threaded as per IS 554

MPA = Mega Pacal, 1 MPA = 10 kgf/cm², 1 kgf/cm² = 14.20 PSI.

6" and 8" Pipes are made to order.



G I 'C' Class Pipe Nipple		1/2"	3/4"	1"	1 1/4"	1 1/2"	2"	2 1/2"	3"	4"
2"	11	15	20	28	29	41	58	77	118	
3"	15	22	29	36	40	56	68	102	150	
4"	21	26	32	47	51	68	100	128	183	
5"	24	30	40	56	59	86	120	154	215	
6"	30	32	47	65	70	99	142	179	248	
7"	35	40	55	75	80	114	164	205	282	
8"	42	45	58	81	90	128	184	273	393	
9"	36	53	68	94	102	143	205	290	418	
10"	35	47	55	83	85	118	152	191	259	
12"	39	51	67	89	99	141	183	230	300	

Size in inch	1/2"	3/4"	1"	1 1/4"	1 1/2"	2"	2 1/2"	3"	4"	6"	8"
Size in mm	15	20	25	32	40	50	65	80	100	150	200
G.I. 'U' Clamp with Nut & Washer 5/16 thick Plain	12	14	16	18	20	23	25	26	32	43	53
G.I. 'U' Clamp with Nut & Washer 5/16 thick PVC Coated	17	19	20	24	26	30	35	39	48	67	85
G.I. 'U' Clamp with Nut & Washer 1/14 thick Plain	9	10	11	12	14	16	18	22	24	32	
G.I. 'U' Clamp with Nut & Washer 1/14 thick PVC Coated	12	14	16	18	20	22	25	30	34	50	

G I Threaded Rod				Stone Ware							
				Size	4"	6"	9"			6"x4"	9"x6"
SIZE			RATE	Pipe 2 feet	94	140	335	Gully Trap	155	635	
Thk mm	Length		RUPEES	Bend	120	200	400	Sewer Trap	725	2300	
8mm	2 mtr		88	Channel 2 feet	77	95	195				
10mm	2 mtr		98	Single Tee	265	350	825				
12mm	3 mtr		138	Double Tee	380	535	1125				

G I ISI Fittings as per IS1879	1/2" (15)	3/4" (20)	1" (25)	1 1/4" (32)	1 1/2" (40)	2" (50)	2 1/2" (65)	3" (80)	4" (100)
Coupling	13.90	20.00	27.25	42.75	51.45	85.60	141.60	215.10	344.95
Cross Tee	36.45	53.05	84.10	139.35	191.00	287.00	453.65	609.80	1524.50
Elbow	15.15	23.15	36.40	60.35	79.35	122.80	231.00	314.10	561.85
Hex Nipple	15.25	23.85	34.30	58.05	71.30	106.35	198.55	290.15	541.75
Reducing Elbow		25.45	39.90	62.75	89.00	136.60	259.15	350.45	630.55
Reducing Socket		21.85	29.65	46.05	56.35	93.90	151.50	231.75	373.05
Reducing Tee		37.95	55.00	83.75	108.25	171.25	326.85	446.40	774.40
Tee	23.00	36.70	50.85	76.25	98.00	156.25	289.20	419.45	697.85
Union	41.05	54.60	75.45	116.95	144.00	218.75	411.45	567.20	777.85

Terms : 1. Payment Immediate. 2. Delivery charges extra at actual. 3. VAT Extra. 5% on Fittings & 12.5% on Solvents.



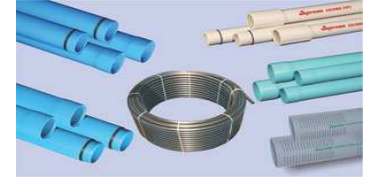
M. N. PADIA & CO.

70, Kika Street, Gulalwadi, Mumbai 400 004.

T. : 91 22 2242 6293 , 2242 3547 , 2927 1311

F. : 91 22 2242 4536

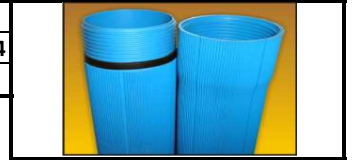
E. : savewater@mnpadia.com , W. : www.mnpadia.com



Supreme Casing Pipes conforming to IS 12818 dt 15-12-2013

Rate per 3 mtr length

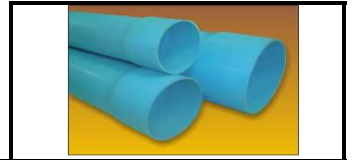
Size in mm	40	50	80	100	125	150	175	200	250	
Size in inch	1 1/2	2	3	4	5	6	7	8	10	
Shallow Well (Suitable upto 80 mtrs)							2699	3949	4950	8809
OD in mm (Min / Max)							165/165.4	200/200.5	225/225.5	280/280.5
Wall Thickness in mm (Min / Max)							5.7 / 6.5	7 / 7.8	7.6 / 8.8	9.6 / 11
Medium Well (Suitable upto 250 mtrs)		508	704	1048	1645	2584	3442	4899	6214	11087
OD in mm (Min / Max)		48 / 48.2	60 / 60.2	88 / 88.3	113 / 113.3	140 / 140.4	165/165.4	200/200.5	225/225.5	280/280.5
Wall Thickness in mm (Min / Max)		3.5 / 4	4 / 4.6	4 / 4.6	5 / 5.7	6.5 / 7.3	7.5 / 8.5	8.8 / 9.8	10 / 11.2	12.5 / 14
Ribbed Screen Pipes		935	1210	1668	2366	3599	4871			
OD in mm (Min / Max)		52 / 52.2	64 / 64.2	92 / 92.3	117 / 117.3	144 / 144.4	169 / 169.4			
Wall Thickness in mm (Min / Max)		3.5 / 4	4 / 4.6	4 / 4.6	5 / 5.7	6.5 / 7.3	7.5 / 8.5			



SDR Casing Pipes

Rate per 6 mtr length

Size in mm	110	140	160	180	200
SDR - 35	2036	3296	4343	5474	6862
Wall Thickness in mm (Min / Max)	3.1 / 3.5	4 / 4.6	4.5 / 4.9	5.1 / 5.6	5.7 / 6.3
SDR - 52	1450	2397	3091	3879	4756
Wall Thickness in mm (Min / Max)	2.1 / 2.4	2.7 / 3.2	3.1 / 3.5	3.5 / 3.9	3.8 / 4.3



	(s/w = Shallow Well)	(m/w = Medium Well)	Rate per 3 mtr length	
Well Guard Pipes as per EN 9869 in Blue Colour	Size in mm	165 s/w	165 m/w	180 s/w
Plain with Coupler		3741	4689	4484
			200 m/w	225 m/w
			7179	8833
				240 m/w
				10487

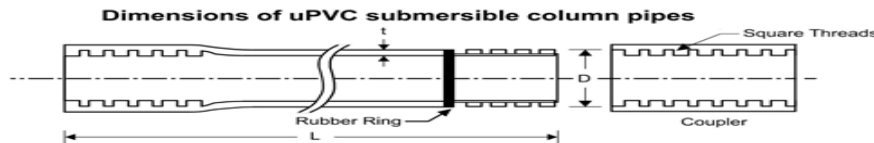
Slotted Pipes (Percolation Pipes) as per IS 4985. Slot width 1.5mm. Distance between slots 10 mm

Rate per 6 mtr length

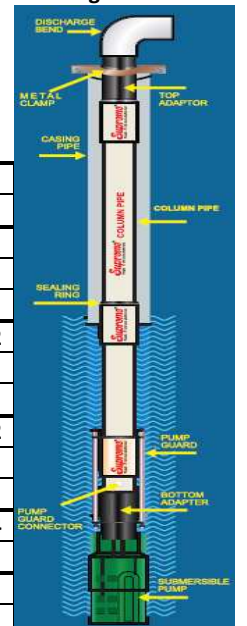
Size in mm	90	110	140	160	180	200	225	250	280	315
Size in inch		3	5	6	7	8	9	10	11	12
Slot Length		70	50	55	80	90	90	95	90	90
Quick Fit 4 kg / cm ²	1470	2028	2621	3379	4308	5251	6677	8105	10127	12942
Quick Fit 6 kg / cm ²	2016	2856	3734	4726	6069	7492	9723	11736	15074	19187
Quick Fit 8 kg / cm ²			4990	6487	8131	10012				
Quick Fit 10 kg / cm ²			5944	7660	9669	11962		18886		

Submersible / Column Pipes for Submersible Pumps

Rate per 3 mtr length



Size in mm	25	32	40	50	65	80	100
Size in inch	1	1 1/4	1 1/2	2	2 1/2	3	4
Light Duty (Wall Thickness - Min/Max)	2 / 2.3	2.4 / 2.9	2.5 / 3.2	3 / 3.7			
Quick Fit		389	502				
Plain Pipe with Coupler	422	509	619	1001			
Medium Duty (Wall Thickness - Min/Max)		2.7 / 3.2	2.7 / 3.2	2.7 / 3.2	2.9 / 3.4	3.3 / 3.7	3.7 / 4.2
Quick Fit		447	521	623			
Plain Pipe with Coupler		662	781	1101	1284	1674	2381
Standard Duty (Wall Thickness - Min/Max)	4.2 / 4.7	3.9 / 4.4	4 / 4.7	4 / 4.4	4.2 / 4.8	5 / 5.7	5.7 / 6.2
Quick Fit		496	576	691			
Plain Pipe with Coupler		602	706	843	1098	1443	1982
Heavy Duty (Wall Thickness - Min/Max)				5.4 / 6	6.4 / 7	7.3 / 7.9	8.4 / 9.4
Plain Pipe with Coupler				1368	2074	2487	4009
Premium (Wall Thickness - Min/Max)				6.5 / 7	9.8 / 10.6		
Pump Guard Pipe (PVC Pipe)				1798		3416	



Submersible Fittings	1	1 1/4	1 1/2	2	2 1/2	3	4
CI Metal Adaptor	1334	1394	1583	1945	3528	4302	5248
Pump Guard	1996	2091	2409	2702	2925	3218	3373
Rubber Ring	4	5	5	6	7		

Terms : 1. Payment Immediate. 2. Delivery charges extra at actual. 3. VAT Extra. 5% on Fittings & 12.5% on Solvents.



M. N. PADIA & CO.

70, Kika Street, Gulalwadi, Mumbai 400 004.

T. : 91 22 2242 6293 , 2242 3547 , 2927 1311

F. : 91 22 2242 4536

E. : savewater@mnpadia.com , W. : www.mnpadia.com



indo green® PP-R

Supreme Indo Green PPR Pipes & Fittings for Hot & Cold water System as per IS 15801 Price list dated 15-12-2013

Pipe length 3 mtrs. Size in mm	20	25	32	40	50	63	75	90	110	160	Tools and Equipment		Rate
UV Stabilised PPR Pipe PN 10						1138	1690	2416	3580	10336		Pipe Scraper	890
UV Stabilised PPR Pipe PN 16	175	278	445	669	1048	1613	2360	3408	5061	14460			
UV Stabilised PPR Pipe PN 20	199	315	517	780	1210	1892	2655	3822	5789	17174			
Wall Thickness in mm PN10	1.9	2.3	2.9	3.7	4.6	4.6	6.8	8.2	10	14.6		Pipe Cutter	
Wall Thickness in mm PN16	2.8	3.5	4.4	5.5	6.9	6.9	10.3	12.3	15.1	21.9		Indian	650
Wall Thickness in mm PN20	3.4	4.2	5.4	6.7	8.4	8.4	12.5	15	18.3	26.6		European	2500

Fittings as per DIN 16962	20	25	32	40	50	63	75	90	110	160	Poyfusion Device		Rate
Ball Valve	433	556	687	1751	2593	3821					SPD 2600	Suitable for	
Bend 90°	36	60	118	152								16-32mm (with matrices)	8270
By Pass Bend (Fab)	63	81	139	297									
By Pass Bend Short (Fab)	46	64	119	246									
Circuit Testing Plug	16	21	56	101	139	219					SPD3800	16-50mm	9066
Coupling	10	15	26	42	81	142	278	362	621			(with matrices)	
Cross Tee	22	34											
Elbow 45°	13	24	37	66	116	206	386	659	2306				
Elbow 90°	14	24	43	77	127	228	461	837	1454		SPD 41200	63-110mm	19850
Endcap Plain	12	24	28	37	63	124	242	317	529				
Flange Adapter				75	115	169	265	457	669	1539			
Hole Repair Plug 7mm & 11mm	10												
Integral Flange with Adapter						605	681	893	1150				
Matrix for PPR Pipe (VAT 12.5)	401	473	532	817	1052	1558	2006	2972	4161				
Metal Flange				450	532	540	622	720	1005	1275		Butt Welding Machine (For above 110mm Pipes)	100000
MTA Plastic	27	22	64	125	144	279							
Pipe Clip	6	6	6	8	13	28						Assembly Jig Suitable for butt welding of 90 to 200 mm sizes	75000
Short Bend 90° (Fab)									3493	5760			
Short Bend 45° (Fab)									2664	3999			
Tank Connector	41	67	89	128	163							Heating Plate for Butt Welding	9950
Tank Connector Long (Fab)	48	72	104	128	176	272							
Tee	16	31	48	87	168	314	565	1166	1908	4945			
Union	126	216	342	520	809	1484							

(VAT on all above Tools @ 12.5%)

Metal Fittings	20x 1/2"	20x 3/4"	25x 1/2"	25x 3/4"	32x 1/2"	32x 3/4"	32x1"	40x 1 1/4"	40x1 1/2"	50x1 1/2"	50x1 1/2"	50x2"	63x2"	75x 2 1/2"	90x 3"
Female Thd Coupler (FTA)	61	102	63	100	134	150	174	342	388		410		913		
Female Thd Elbow	67	90	98	120	103	140	204	391	424		696				
Female Thd Tee	82	115	91	126	114	159	214								
Female Thd Union	149			247			403	597							
Male Thd Coupler (MTA)	83	137	82	156		229	244	421	577		542	734	1225	1950	2972
Male Thd Elbow	83	137	111	160		175	208			506					
Male Thd Tee	114	158	120	166		211	224								
Male Thd Union	186			321			535	874							
Moulded Fittings	25x20	32x20	32x25	40x20	40x25	40x32	50x20	50x25	50x32	50x40	63x20	63x25	63x32	63x40	63x50
Reducer Elbow	28	72	74		78	82			106				352		
Reducer Female / Female	13	21	22	99	99(F)	54(F)	118(F)	118(F)	72	76	247(F)	235(F)	241(F)	122	137
Reducer Male / Female	11	20	35	36	42	43	74	74	79	78		80	83	145	145
Reducer Tee	31	58	58	108	110	110	167	189	207	207		450	463	463	474
	75x40	75x50	75x63	90x40	90x50	90x63	90x75	110x75	110x90	160x90	160x110	MATERIAL PROPERTIES			
Reducer Elbow					1158	1128									
Reducer Female / Female				574	604	391		1173	737						
Reducer Male / Female		161	228	223	242	231	240	637	477(F)						
Reducer Tee	599	599	609		954	954	989	2626(F)	2892	5395	5545				
Reducer PN 16										1021	979				
Reducer PN 10										772	896				
Fabricated Fittings	75x20	75x25	75x32	90x20	90x25	90x32	110x20	110x25	110x32	110x40	110x50	110x63	110x90	160x63	160x75
Reducer Female / Female				554	536	542	1199	1187	1187	1223	1247	1100		1148	1223
Reducer Male / Female		273								435	457	599	477	824	841
Reducer Tee	742	728	721	1124	1109	720					2778	2865			

JOINING PROCEDURE



Terms : 1. Payment Immediate. 2. Delivery charges extra at actual. 3. VAT Extra. 5% on Fittings & 12.5% on Solvents.



M. N. PADIA & CO.

70, Kika Street, Gulalwadi, Mumbai 400 004.

T. : 91 22 2242 6293 , 2242 3547 , 2927 1311

F. : 91 22 2242 4536

E. : savewater@mpadia.com , W. : www.mnpadia.com



Supreme PVC SWR Pipes Conforming to IS 13592 Price list dated 15-12-2013

SIZE in Inch Size in mm	Type A ISI SWR Pipes				Type B ISI SWR Pipes			
	2 1/2"	3"	4"	6"	2 1/2"	3"	4"	6"
	75	90	110	160	75	90	110	160
Single Socket 10 Feet(3 mtr)	336	534	603	1509	632	749	935	1879
Single Socket 10 Feet(3 mtr) Q/F	336	534	603	1509	632	749	935	1879
Double Socket 10 Feet(3 mtr)	392	551	711	1602	707	857	1057	1902
Single Socket 6 Feet(1.8 mtr)	233	335	409	932	450	524	645	1270
Double Socket 6 Feet(1.8 mtr)	247	346	426	945	445	516	665	1289
Double Socket 4 Feet(1.2 mtr)	170	268	295		313		449	897
Double Socket 3 Feet(0.9 mtr)	143	185	239		245	284	351	
Double Socket 2 Feet(0.6 mtr)	102	153	172	331	169		239	
Supreme SWR Fittings (Rubber Ring / Pasted) conforming to IS 14735 as far as applicable								
Size in mm	75	90	110	160 (CR)	Pipes conforms to IS 13592			
Bend 45° Plain	51	94	95	305	Nominal outside	Tolerance	Wall Thickness	
Bend 87.5° Plain	57	109	117	324	Diameter	on outside	Type A	Type B
Bend 87.5° with Door	79	130	147	361	OD in mm	Diameter	Min / Max	Min / Max
Boss Adapter	23		42		75	0.3	1.8 / 2.2	3.2 / 3.8
Clamp	16	17	22	47	90	0.4	1.9 / 2.3	3.2 / 3.8
Clean Out		68	77	198	110	0.4	2.2 / 2.7	3.2 / 3.8
Cleaning Pipe	95	158	188	405	160	0.5	3.2 / 3.8	4.0 / 4.6
Connecting Coupler	39		77		Size in mm	40	50	63
Coupler	43	83	80	254	Bend 45° Plain	46	34	74
Cross Tee Plain	146	187	198	673	Bend 87.5° Plain		43	
Cross Tee with Door	224		277		Bend 87.5° with Door		58	
Dome Shaped Roof Outlet			1564		Clamp		12	13
Door Cap	39	43	52		Clean Out	9	18	32
Double Y	154		286		Coupler		39	
Double Y with Door	216		389		Floor Drain (Sch 40)		59	
Invert Y / Reverse Y	170				Single Y	51	73	88
Repair Coupler	71		104		Socket Plug		12	
Rubber Ring	24	27	31	48	Tee Plain		57	
Single Y	99	174	188	683	Tee with Door		73	83
Single Y with Door LH/RH	166		300		Vent Cowl		12	16
Socket Plug	43		53	254	Waste Coupling	16	21	
Tee Plain	79	158	161	469	Traps w/o Gratings	4" HT	5" HT	7" HT
Tee with Door	95	182	190	523	Multi Trap 110mm	197	277	347
Vent Cowl	17	29	29	65	Plain Floor Trap 110mm	162	240	
WC Bend with Lipring white			173			75mm	90mm	110mm
WC Connector 1 1/2 foot long			264		Nahni Trap 3 1/2" HT	134	128	147
WC Connector (Red) 125x110			169		Floor Trap Partition/Plug Seal		7	
	110x40	110x50	110x63	110x75		Short	Long	75x75
Saddle Strip/Branch Saddle	72	76	204	85	Gully Trap 160x110mm	529	549	
	160x110	160x40	160x50	160x63	P Trap 110 x 110	342	125x110 - 485	176
200x63 - 204 // 200x75 - 350	240	140	231	194	Q Trap 110 x 110	398	125x110 - 578	
250x40 - 550 // 63x40 - 60	160x75	200x50	200x110	200x160	S Trap 110 x 110	480	125x110 - 680	
75x40 - 25 // 75x50 - 28	246	210	398	398	Square Gully Trap 110mm	470		
	90x75	110x50	110x75	110x90	160x75(CR)	160x110(CR)	Solvent	Rate
Bell Mouth Trap		54	349				250 ml	90
Eccentric Reducer			104				500 ml	170
P Trap			317				1000 ml	280
Reducer	57		87	91		212	5000 ml	1430
Reducer Door Cross Tee			310				Rubber Lub.	Rate
Reducer Double Y			495			672	100 gm	63
Reducer Door Tee			212	206	426	477	250 gm	132
Reducer Tee			175	196	429	456	500 gm	213
Reducer Y			175		1059 (pas)	526	1000 gm	375
Reducer Door Y						514		

Terms : 1. Payment Immediate. 2. Delivery charges extra at actual. 3. VAT Extra. 5% on Fittings & 12.5% on Solvents.



M. N. PADIA & Co.

70, Kika Street, Gulalwadi, Mumbai 400 004.

T. : 91 22 2242 6293 , 2242 3547 , 2927 1311

F. : 91 22 2242 4536

E. : savewater@mnpadia.com , W. : www.mnpadia.com

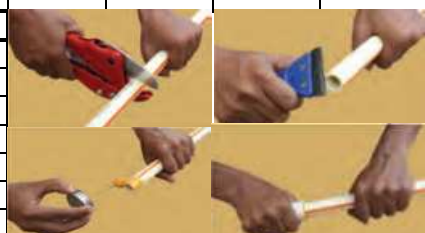


CMIL-3673470

Based on Japanese Material and Technology

Lifeline™ C-PVC

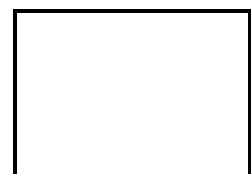
SUPREME CPVC PIPES & FITTINGS as per ASTM 2846 dt 15-12-2013								Sch 40 Pipes & Fittings		
15-07-2013	size in inches	1/2"	3/4"	1"	1 1/4"	1 1/2"	2"	2 1/2"	3"	4"
	size in mm	15	20	25	32	40	50	65	80	100
PIPES CTS SDR 11 (3 Mtrs.)		178	286	387	557	803	1313			
PIPES CTS SDR 13.5 (3 Mtrs.)		197	292	457	689	932	1563			
Schedule 40 Pipes (3 Mtrs.)								2840	3691	5250
Schedule 80 Pipes (3 Mtrs.)								3870	5222	7748
BALL VALVE		154	199	288	577	826	1533	8056	10755	
COUPLING (ab 2" Sch 80)		8	12	25	42	77	163	603	856	1327
CPVC STRAP		3	4	6	9	12	15			
CROSS		25	53							
ELBOW 45° (ab 2" Sch 80)		14	25	45	85	132	274	876	1244	2243
ELBOW 90° (ab 2" Sch 80)		10	15	36	69	129	271	969	1509	2511
END PLUG THREADED		17								
ENDCAP (ab 2" Sch 80)		7	13	20	37	55	118	390	581	1008
FEMALE ADAPTER (METAL)		104	173	276	570	645	1257			
FEMALE ADAPTER (PLASTIC TH)										
FAPT (ab 2" Sch 80)		15	28	42	95	126	199	487	736	1229
FEMALE ELBOW (METAL)		46	86	314	413					
FEMALE TEE (METAL)		58	106	210						
FLANG ADAPTER								1218	1389	2272
LONG RADIUS BEND		34	62	80	133	208	404			
MALE ADAPTER (METAL)		107	171	271	557	701	1339			
MALE ADAPTER (PLASTIC THD.)										
MAPT (ab 2" Sch 80)		11	21	33	47	71	139	673	940	1455
METAL STRAP		7	11	14	16	20	26			
STEP OVER BEND		51	84	158	247	339	668			
TANK ADAPTER		43	58	86	190	220	348			
TEE (ab 2" Sch 80)		14	25	47	88	159	340	1324	1948	3232
TRANSITION BUSHING		8	11	21	40	51	84			
UNION		96	108	146	173	260	484			
		3/4" x 1/2"	1" x 1/2"	1" x 3/4"	1 1/4" x 1/2"	1 1/4" x 3/4"	1 1/2" x 1"	1 1/2" x 1/2"	1 1/2" x 3/4"	1 1/2" x 1"
REDUCER BUSHING		9	21	18	33	29	24	53	47	46
REDUCER COUPLING		17	25	28	53	55	63			102
REDUCER ELBOW		21		44		67			90	
REDUCER TEE		40	64	57	158	119	111		178	181
		1 1/2" x 1 1/4"	2" x 3/4"	2" x 1"	2" x 1 1/4"	2" x 1 1/2"	2 1/2" x 2"	3" x 1 1/2"	3" x 2"	3" x 2 1/2"
REDUCER BUSH(above 2" Sch 80)		32	92	93	97	83	384	446	387	499
REDUCER COUPLING		89	105	195	202	205				935
REDUCER TEE			341	342	362	336	765	1805	1921	
		2" x 1/2"	2 1/2" x 1 1/4"	2 1/2" x 1 1/2"	3" x 3/4"	4" x 1 1/2"				
REDUCER TEE		340	674	587	1901	2191				
		4" x 1"	4" x 2"	4" x 2 1/2"	4" x 3"	3" x 1"	3" x 1 1/4"			
REDUCER BUSH(Sch 80)			725	767	1035	427	438			
REDUCER TEE		1732	2088							
		3/4" x 1/2"	1" x 1/2"	1" x 3/4"						
FEMALE ADAPTER (METAL)		58	89	106						
FEMALE ADAPTER (PLASTIC)		25								
FEMALE ELBOW (METAL)		50	107	180						
FEMALE TEE (METAL)		60	117	192						
MALE ADAPTER (PLASTIC)		24								
MALE ADAPTER (METAL)		92	196							
SOLVENT		20	50	118	237	473	946	Pressure Rating SDR11 Pipes		
AS PER ASTM F 493		52	125	171	275	518	926	Temp	Pressure Rating	
								27° C	27.60 kg/cm ²	
Primer (above 2")								82° C	6.8 kg/cm ²	



TERMS & CONDITIONS :

- SUPREME CPVC : MCGM & BIS APPROVED Pipes IS : 15778 UPTO 2" (50mm)
- Pipes are as per CTS – Copper Tube Size. Pipes and Fittings as per ASTM D-2846
- Pipes are @ per piece, Fittings are @ per piece and Solvent are @ per Tin in Indian Rs.
- Our responsibility ceases after the materials are dispatched from our warehouse.
- Transport charges extra at actual. Octroi if applicable extra.
- Prices prevailing at the time of dispatch will be applicable. Prices subject to change w/o notice.
- Payment immediate.
- VAT extra. VAT on Pipes and Fittings @ 5%. VAT on Solvents and Ballvalve @ 12.5%

Terms : 1. Payment Immediate. 2. Delivery charges extra at actual. 3. VAT Extra. 5% on Fittings & 12.5% on Solvents.





M. N. PADIA & Co.

70, Kika Street, Gulalwadi, Mumbai 400 004.

T. : 91 22 2242 6293 , 2242 3547 , 2927 1311

F. : 91 22 2242 4536

E. : savewater@mpadia.com . W. : www.mnpadia.com



Supreme HDPE Pipes as per IS 4984 dt 15-12-2013

Rate per Mtr.

Size		HDPE Pipes PE 63 Working Pressure in kg/cm ²								HDPE Pipes PE 80 Working Pressure in kg/cm ²							
mm	inch	Coil Length	2.5	4	6	8	10	12.5	16	2.5	4	6	8	10	12.5	16	
20	½	500	-	-	-	-	41	51	55	-	-	-	-	-	43	51	
25	¾	500	-	-	-	52	62	72	86	-	-	-	-	55	64	77	
32	1	500	-	-	70	87	103	119	142	-	-	-	75	90	107	129	
40	1¼	200	-	77	104	132	157	188	219	-	-	93	115	138	167	200	
50	1½	200	-	115	159	206	242	289	341	-	-	116	142	181	216	306	
63	2	100	123	180	254	323	380	452	532	-	-	158	220	281	341	480	
75	2½	100	171	254	364	458	542	641	754	-	-	217	315	399	478	680	
90	3	100	246	365	519	654	774	919	1082	216	310	449	571	686	812	982	
110	4	50	365	547	768	968	1163	1366	1619	303	455	671	854	1015	1219	1458	
125	4½	per mtr	461	697	993	1256	1490	1760	2089	399	602	860	1097	1314	1564	1882	
140	5	per mtr	584	870	1241	1576	1876	2212	2620	497	748	1077	1374	1651	1964	2360	
160	6	per mtr	754	1141	1619	2054	2441	2888	3416	644	977	1406	1789	2152	2557	3076	
180	7	per mtr	951	1434	2046	2595	3082	3653	4315	800	1232	1767	2269	2721	3233	3890	
200	8	per mtr	1173	1775	2520	3198	3820	4509	5335	982	1506	2191	2795	3352	4004	4793	
225	9	per mtr	1482	2267	3182	4048	4813	5704	6742	1242	1920	2759	3526	4242	5044	6078	
250	10	per mtr	1817	2763	3938	4999	5949	7021	8323	1531	2368	3407	4361	5237	6231	7484	
280	11	per mtr	2272	3459	4935	6262	7475	8812	10439	1922	2947	4260	5457	6559	7836	9396	
315	12	per mtr	2881	4347	6223	7922	9427	11145	13203	2412	3751	5390	6908	8299	9876	11883	
355	14	NA	3646	5608	-	-	12022	14259	16818	3069	4739	6802	-	10482	12526	15011	
400	16	NA	4750	7262	-	-	15564	18476	-	3978	6141	-	-	13582	16204	19426	
450	18		5912	9174	12996	16626	19830			4819	7588	10885	13946	16808	20191		

Size		HDPE Pipes PE 100 Working Pressure in kg/cm ²					
mm	inch	Coil Length	6	8	10	12.5	16
20	½	500	-	-	-	-	43
25	¾	500	-	-	-	55	70
32	1	500	-	-	77	90	112
40	1¼	200	-	97	116	142	171
50	1½	200	119	149	180	219	262
63	2	100	186	238	286	341	415
75	2½	100	264	333	406	481	584
90	3	100	374	478	581	697	844
110	4	50	549	712	860	1034	1250
125	4½	per mtr	712	919	1106	1329	1615
140	5	per mtr	895	1150	1386	1669	2018
160	6	per mtr	1163	1482	1808	2178	2644
180	7	per mtr	1470	1891	2295	2755	3337
200	8	per mtr	1809	2331	2829	3394	4096
225	9	per mtr	2296	2924	3569	4299	5209
250	10	per mtr	2820	3639	4396	5289	6427
280	11	per mtr	3539	4564	5508	6630	8057
315	12	per mtr	4480	5712	6976	8394	10179
355	14	NA	5680	7307	8874	-	12919
400	16	NA	7345	9466	11497	-	16747
450	18		9169	11709	14162	17032	20781

Standards		
Applications	Grade	Std
Potable water mains	PE63 & PE80	IS4984
Rural and Agri Pipes	PE63 & PE80	IS14151
Column Pipes for pumps	PE63 & PE80	IS4984
Sprinkler Irrigation	PE63	IS14151
Sewerage	PE63, PE80 & PE100	IS14333
Coal Handling in mines	PE80 & PE100	IS4984
Industrial Applications	PE80	IS4984
PLB Ducts	PE63 & PE80	TEC spec
ID Pipes for Submer pump	PE63 & PE80	Co. Std



Terms : 1. Payment Immediate. 2. Delivery charges extra at actual. 3. VAT Extra. 5% on Fittings & 12.5% on Solvents.



M. N. PADIA & Co.

70, Kika Street, Gulalwadi, Mumbai 400 004.

T. : 91 22 2242 6293 , 2242 3547 , 2927 1311

F. : 91 22 2242 4536

E. : savewater@mnpadia.com , W. : www.mnpadia.com



Supreme Nudrain Pipes(IS15328)&Ecodrain(EN13476) for Sewerage & Drainage dt 15-7-2013

Rate per Pipe 6 mtr length

Size in mm	110	125	160	200	250	315	400
U Drain Pipes Plain Quick Fit SN2			3272	5082	7758	12883	
U Drain Pipes Plain Quick Fit SN4		2598	4127	6327	9976	16141	24781
U Drain Pipes Plain Quick Fit SN8	2290	2629	4896	7670	11929	18532	
U Drain Pipes (Rubber Ring) SN4			4431	6789	10609	16579	
U Drain Pipes (Rubber Ring) SN8	2433		5209	8101	12451	19741	

Eco Drain Pipes SN4	1659(SN8)		2808	4234	6793	9988	
Eco Drain Wall Thickness mm	3.5		4.3	5.6	6.5	8	

Fittings and Accessories (Click Ring Type)

Size in mm	110	125	160	200	250	315	400
Bend 11.25° / 22.5° / 30°	245		715				
Bend 60°	291		816				
Bend 45° - (RxR 110mm - Rs. 127)	155		363				
Bend 45° - Long (Pasted)			1757				
Bend 87.5°	200		407				
Blanking Plug (75mm Rs. 27)	51		108				
Cleaning Rod	148		171	Extension Rod 20mm x 2mtr long		107	
Coupler	171		321	654	1061		
Coupler SN4 (Fab)	123		289	614	901	1700	3480
Cross Tee (CR)			774				
Equal Tee (SN8-Pasted)			948				
In situ Adapter (Fab) 75mm - Rs.210	434		696	1214			
RCC Adapter				1911	3059	5732	
Short Bend 22.5°/30°/45°				1014			
Single Y	301		766				
Socket Plug	51		262	422	480	1229	
Square Gully Trap	556					90x75	110x90
Stoneware Pipe Adapter (Plain End)	321		576		Reducer	65	89
Stoneware Pipe Adapter (Socket End)	256		534		Chamber Adapter		620
Swept Bend 87.5°	165	Short 110mm - Rs. 128 Long - Rs. 272			Frame & Grating 315mm		2688
Swept Tee (RxR)	282		771		Frame & Grating 450mm		4184
Single Tee (RxRxspg)	243		486	ULTRA SFRC		450	600
	160x110	200x160	250x160	Frame & Cover		8545	10167
Bottle Gully Trap (6"x4"x4" -Rs. 875)	855	1431		Frame & Cover with Grating		9322	10682
Eccentric Reducer	208			Manhole Cover with Frame 10T		17091	
Reducing Door Tee (RxRxspg)	495			Manhole Cover with Frame 20T			23996
Reducing Tee (CR)	467		2963(SN8)	Manhole Cover with Frame 40T			37289
Reducing Y (CR)	583			Manhole Cover with Grating 10T		18712	
Swept Tee	790			Manhole Cover with Grating 20T			34977
				Manhole Cover 2.5 T		8675	
				Manhole Cover 5 T		11102	

PVC Gratings for Surface Drainage

Gratings (15mm Thick)	150x150	200x200	250x250	300x200	300x150	300x300	400x300
PVC Grating	641	896	1431	1235	592	1038	1516
PVC Grating with Locking Studs		972					
	450x300	450x450	500x150	500x200	500x300	500x375	500x400
PVC Grating	1730	1976	835	1049	1763	1943	2047
PVC Grating with Locking Studs			1002	1215		2022	2123
	600x150	600x200	600x300	600x375	600x400	600x450	600x475
PVC Grating	997	1244	1984	2271	2457	2757	2927
PVC Grating with Locking Studs	1036	1281	2062	2348	2542	2842	3205
	600x500	600x600					
PVC Grating	3044	3205					
PVC Grating with Locking Studs	3130	3674					

Terms : 1. Payment Immediate. 2. Delivery charges extra at actual. 3. VAT Extra. 5% on Fittings & 12.5% on Solvents.



M. N. PADIA & CO.

70, Kika Street, Gulalwadi, Mumbai 400 004.

T. : 91 22 2242 6293 , 2242 3547 , 2927 1311

F. : 91 22 2242 4536

E. : savewater@mnpadia.com , W. : www.mnpadia.com



therefore operationa
Longer Life and O



Supreme Nudrain Ultra Inspection Chamber Components dt 15-07-2013

Length in mm	600	900	1200	1500	1800	2400
Shaft Pipe with Rubber Seal 600	7922	9938	12214	13706	15808	19384
Shaft Pipe without Rubber Seal 600	4510	7027	9592	11476	13991	18394
Length in mm	320	470	460	710	1020	
Raiser 250	322	486				
	355x200	355x460	450x1020	450x710	450x460	
Shaft Pipe 355	1754	2650				
Shaft Pipe 450			6719	5830	3938	
Length in mm	600	800	1000	1100	1300	
Shaft Pipe 1000mm with Ladder	27413	32895	40205	42398	48612	
	600x780	600x1080	600x1380	600x1680	600x1980	
U Shaft Pipe with Socket & Rubber Seal	14803	18003	18184	23638	23758	
	315 (110x110)	355(160x160)	450(200x200)	450(160x160)	600(250x250)	600(315x315)
Air Tight Cover PVC	1216	1380				
Bend 45° Left or Right Hand	3307				14163	
Bend 90° Left or Right Hand	1033	1499	2697		12975	13524(200x200)
Cover (315mm LW Rs. 393)	759	1279 (LW)	2010			
Frame (315mm LW Rs. 404)	694		1418			
Frame & Cover Light Weight	731		3439			
Frame & Cover Heavy Weight	1462					
Junction 90° (Cross) Left & Right Hand		2400	3658(200x160)		17544	
Junction 90° Left or Right Hand	1198	2248	3146(200x160)		16082	
Junction 90° Left 45° or Right 45° Hand	1188					
Junction Two 90° Inlet	1142					
Multiple Inlet				2857		
Shaft Connector with Rubber Seal					9660	
Shaft Pipe Branch				3640(160x110)		
Straight Through	1051	1598	2697		14300	
Straight Through 600mm Shaft						8863
Straight Through 1200mm Shaft						13304
Telescopic Adapter					7876	
	250 (110x110)					
Bend 45°	2193	Eccentric Reducer 200x160		786		
Bend 90° Left & Right Hand w/o Trap	914	Eccentric Reducer 250x160		977		
Bend 90° Left & Right Hand with Trap	1159	Eccentric Reducer 250x200		951		
Cover for Raiser	222	Eccentric Reducer 315x200		1517		
Frame	230	Eccentric Reducer 315x250		1577		
Frame & Cover	458	Master Trap 160 x 110		2315	2315(160x60)	
Junction 90° Left & Right Hand w/o Trap	968	U Cone 1000 mm with Ladder		30702		
Junction 90° Left & Right Hand with Trap	1279	U Trap 75mm		226		
Grease Trap with Cover 450 ltr	28631	Grease Trap with Cover 50 ltr		7861		
Grease Trap w/o Cover 450 ltr	23148	Grease Trap w/o Cover 50 ltr		6168		



Terms : 1. Payment Immediate. 2. Delivery charges extra at actual. 3. VAT Extra. 5% on Fittings & 12.5% on Solvents.